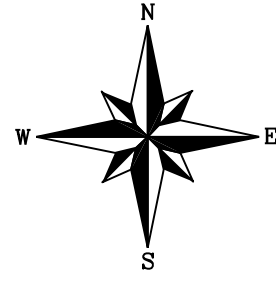


**EMERALD PARK EAST**  
**WHITE CITY ADDITION PHASE IV**

**PLAN SHOWING**  
**PROPOSED SUBDIVISION**

OF PART OF  
 BLOCK G, REG'D PLAN NO. 98RA29307  
 in SEC. 14, TWP. 17, RGE. 18, W.2M. &  
 part of the S.E. & N.E. 1/4 SEC. 14, TWP. 17, RGE. 18, W.2M.  
**WHITE CITY, SASKATCHEWAN**

SCALE 1:2000



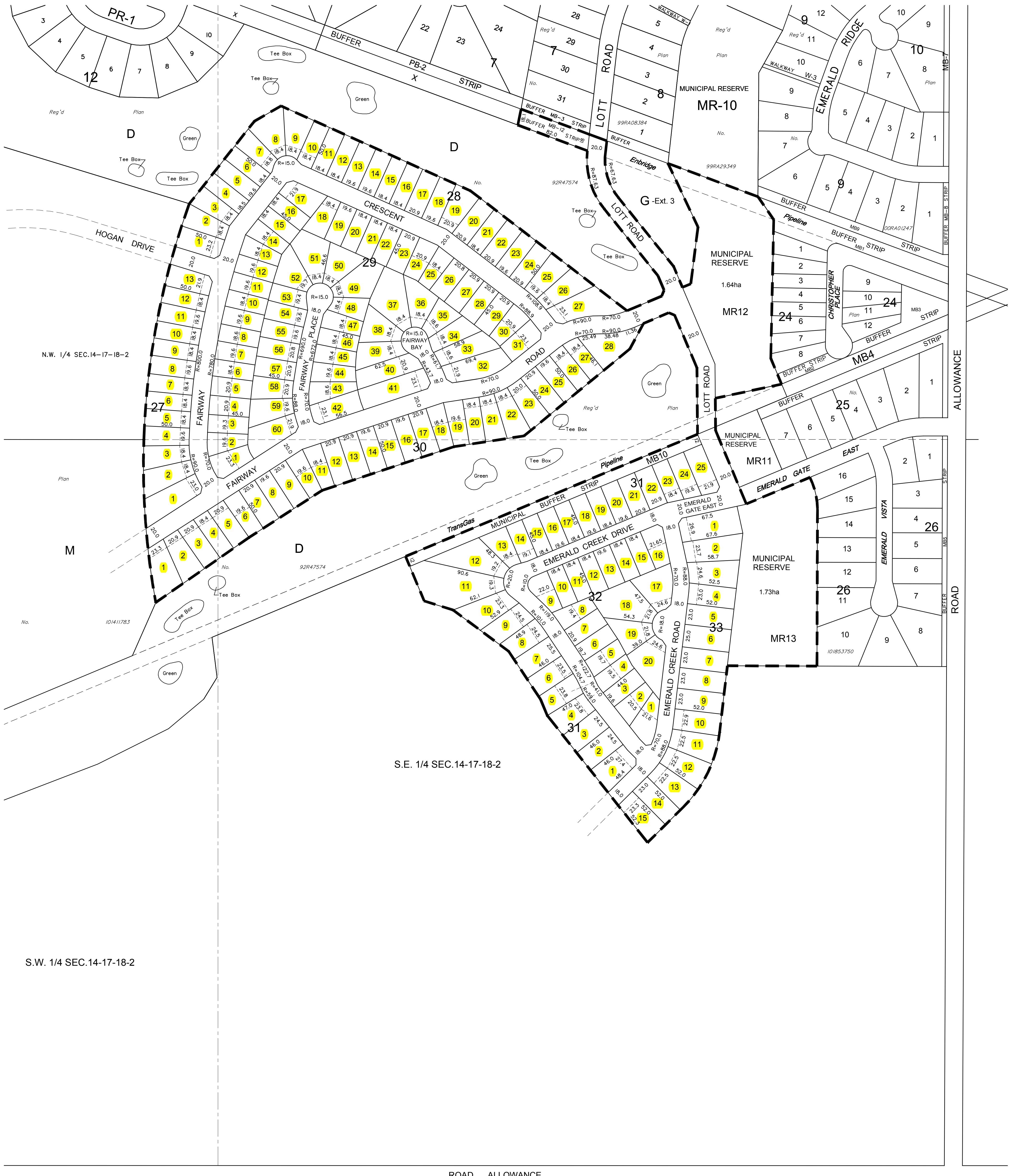
**NOTE:**

- Measurements are in metres and decimals thereof.
- Area to be approved is outlined by a bold dashed line and contains 30.53 ha.
- Setbacks shown are at 10m and 22m.
- Corner cutoffs are 5.0 metres.
- Some measurements are approximate and may differ from the final Plan of Survey by as much as 1 %.

December 8, 2006  
 Date  
 Revised Jan. 29, 2007

Saskatchewan Land Surveyor

OWNER:  
 GREAT PLAINS LEASEHOLDS LTD.



ROAD ALLOWANCE